

**Single Leaf EI<sub>2</sub>30 / T30 Fire Retardant Acoustic Door**

<b>Fire Protection</b>	<b>EI<sub>2</sub>30 / T30</b>	<b>tested acc. to EN 1634-1</b>
<b>Smoke Control (optional)</b>	<b>S<sub>a</sub>, S<sub>200</sub> / RS</b>	<b>tested acc. to EN 1634-3</b>
<b>Self-Closing (optional)</b>	<b>up to C5</b>	<b>tested acc. to EN 1191</b>
<b>Sound Insulation</b>	<b>R<sub>w,P</sub> 48 dB</b>	<b>tested acc. to EN ISO 10140-2</b>

**Certified in accordance with DIN EN 16034 / 14351-1 / 13241**  
**General Building Approval as T30-1 (-RS) -FSA acc. to DIN 4102-5 / DIN 18095**

**Optional Audited Additional Functions**

- Burglar Protection	<b>RC2/RC3</b>	tested acc. to EN 1627
- Bullet Resistance	<b>FB4/FB6</b>	tested acc. to EN 1522
- Air Tight	<b>up to class 4</b>	tested acc. to EN 1026
- Rain- and Fire-Water Tight	<b>class 6A</b>	tested acc. to EN 1027
- Wind Load Resistance	<b>up to class C5</b>	tested acc. to EN 12211
- Blast Resistance	<b>up to 20 kPa</b>	tested acc. to EN 13124-1
- Explosion Protection	<b>up to zone 1/21</b>	acc. to EN 1127-1 or ATEX 2014/34/EU
- Stainless Steel		

**Range of Dimension**

**Range of Dimension for Doors**      **Width** from 625 mm to 1500 mm  
**Height** from 1750 mm to 3000 mm

**Range of Dimension for Hatches**      **Width** from 500 mm to 750 mm  
**Height** from 500 mm to 1750 mm

**Technical Specification and Tender Text**

<b>Product:</b>	<b>EI<sub>2</sub>30 / T30 single leaf fire retardant acoustic door</b> <b>brand Buchele tested acc. to EN 1634-1 and EN ISO 10140-2</b>
<b>Door Type:</b>	<b>PLANE Line PL 301 BASIC</b>
<b>Sound Insulation R<sub>w,P</sub></b>	<b>48 dB</b>
<b>Structural Opening:</b>	<b>.... x .... mm</b>
<b>Door Leaf:</b>	Double-walled, planar 70 mm thick steel door without hinge embossing, three sides rebated with thick rebate and adjustable fixed sealing profile in the rebate. Without bottom stop. Special insulating inserts fully laid-in and glued. Securing pin screwed in door leaf rebate. Double tow sealing system.
<b>Threshold:</b>	Threshold profile as barrier-free hump sill. Surface galvanized and welded to the frame.
<b>Frame:</b>	3-sided circumferential rebated corner frame with visible black coated intumescent material in rebate. High-quality multi chamber sealing profile adjustable fixed in the three-sided groove.

<b>Hinges:</b>	Three-part, height adjustable construction hinges with hinge pin retention and ball bearing spacer ring for smooth door movement.								
<b>Door Closer:</b>	Door closer system with standard arm acc. to EN 1154 silver coloured mounted on hinge side.								
<b>Fitting:</b>	Mortise lock with latch lever function acc. to EN 12209 (prepared for installation of a profile cylinder lock, provided by customer). Door handle set in acc. to EN 1906 fixed pivoted synthetic material black in U-shape with rounded short-plate.								
<b>Surface:</b>	Door leaf and frame galvanized und primed with 2K-PUR primer (Very High Solid) similar RAL 7035.								
<b>Installation:</b>	<table border="0"> <tr> <td>masonry</td> <td>≥ 115 mm</td> </tr> <tr> <td>concrete</td> <td>≥ 100 mm</td> </tr> <tr> <td>areated concrete</td> <td>≥ 200 mm</td> </tr> <tr> <td>mounting wall F60</td> <td>≥ 125 mm</td> </tr> </table>	masonry	≥ 115 mm	concrete	≥ 100 mm	areated concrete	≥ 200 mm	mounting wall F60	≥ 125 mm
masonry	≥ 115 mm								
concrete	≥ 100 mm								
areated concrete	≥ 200 mm								
mounting wall F60	≥ 125 mm								

**Alternative: PLANE Line PL 301 PREMIUM with flush mounted optics**

<b>Frame:</b>	3-sided circumferential rebated PLANE Line special corner frame for flush mounted optics on hinge side. With visible, black coated intumescent material in rebate. High-quality multi-chamber sealing profile adjustable fixed in the three-sided groove.
<b>Hinges:</b>	Three-part, height adjustable construction hinges with hinge pin retention and ball bearing spacer ring for smooth door movement.
<b>Door Closer:</b>	Slide rail door closer system acc. to EN 1154 silver coloured mounted on hinge side.

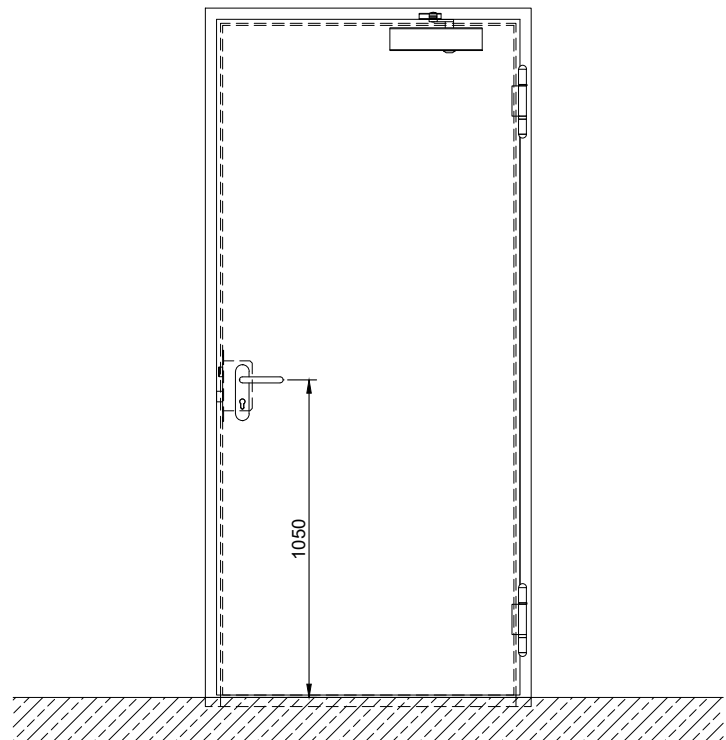
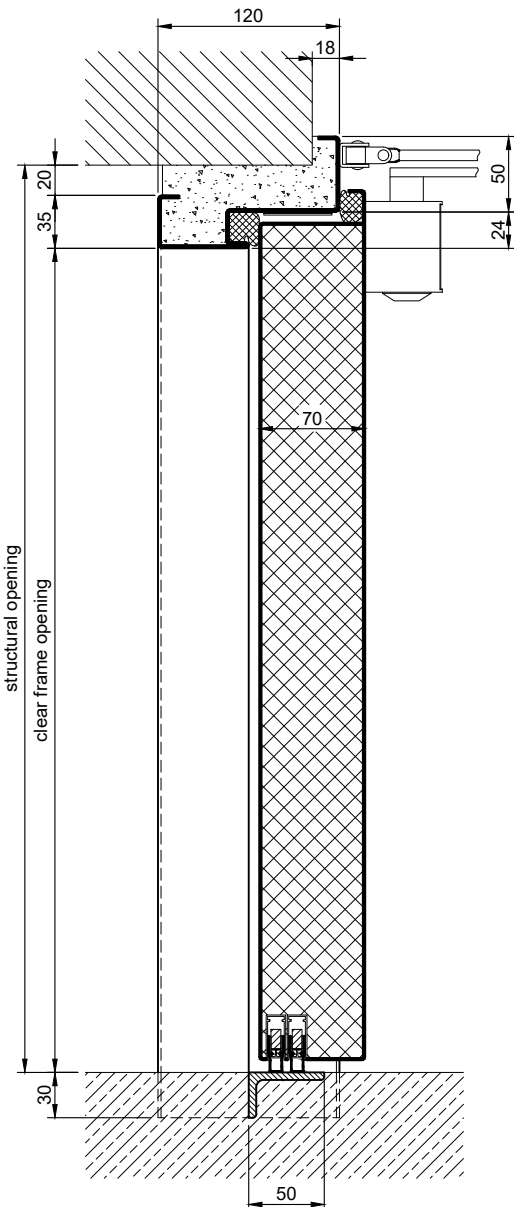
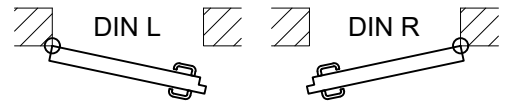
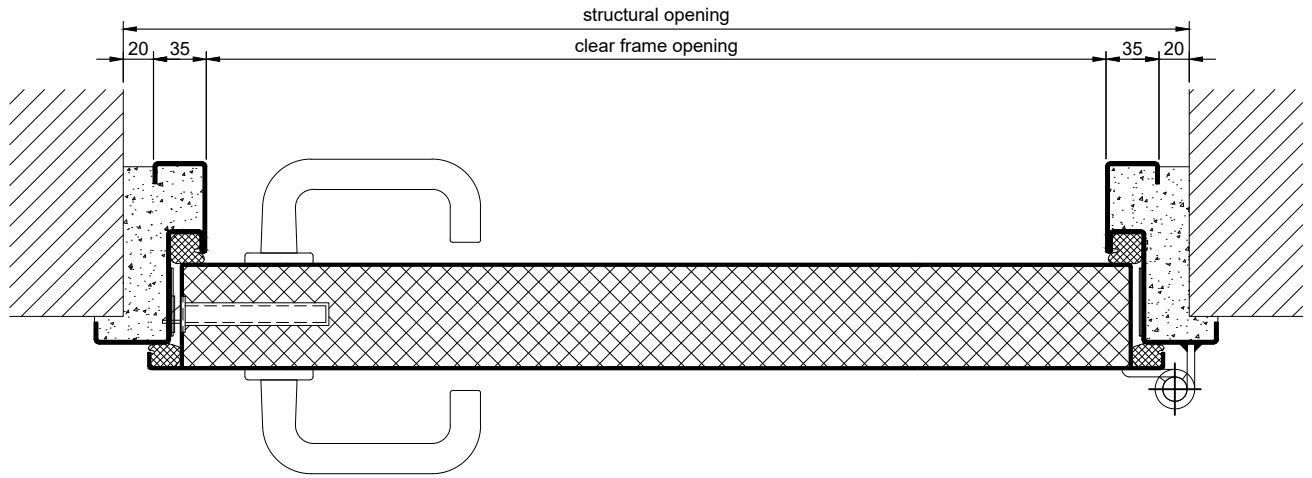
**Alternative: PLANE Line PL 301 SUPERIOR with flush mounted optics**

<b>Frame:</b>	3-sided circumferential rebated PLANE Line special corner frame for flush mounted optics on hinge side. With visible, black coated intumescent material in rebate. High-quality multi-chamber sealing profile adjustable fixed in the three-sided groove.
<b>Hinges:</b>	Concealed hinge system adjustable in three dimensions.
<b>Door Closer:</b>	Concealed slide rail door closer system acc. to EN 1154 integrated in frame and door leaf.

**Supplementary Equipment**

<b>Standard Glazing:</b>	F30 fire-protective glazing fixed with profiled and visible screwed steel glazing bars. Minimum border 125 mm on side and top, base 300 mm. Sound Insulation $R_{w,P}$ max. 50dB
<b>Flush Glazing:</b>	PLANE Line F30 special glazing flush mounted with outer edge of door leaf on hinge side and opposite hinge side. Edge enamelling and permanent elastic glazing joint in colour black RAL 9004. Minimum border 125 mm on side and top, base 300 mm. Sound insulation $R_{w,P}$ max. 50dB
<b>Stainless Steel:</b>	Material 1.4301 (V2A) or 1.4404 (V4A), Surface mill finish or brushed.
<b>BUCHELE DELUXE:</b>	The exclusive surface coating.

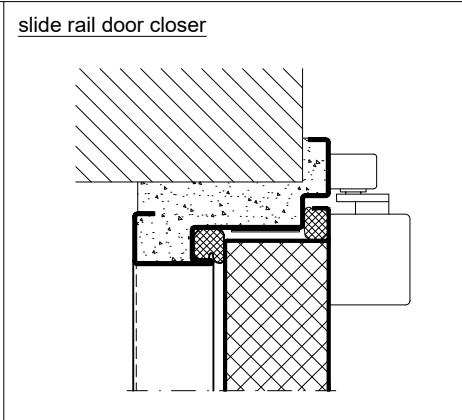
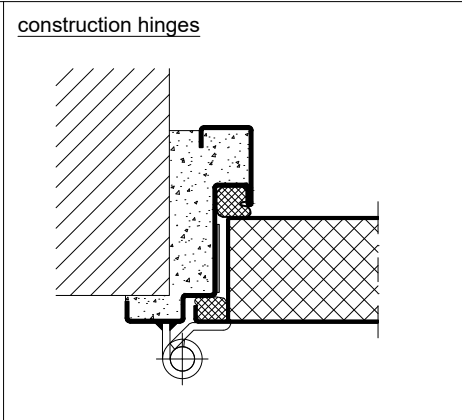
### BASIC - Version



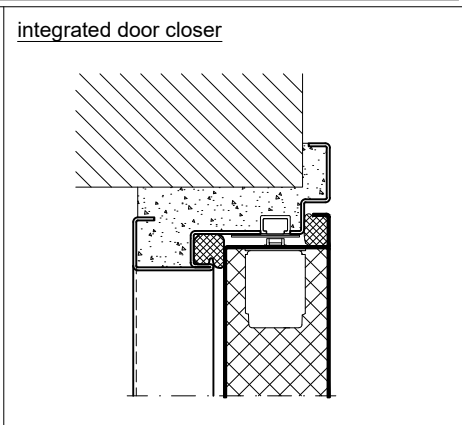
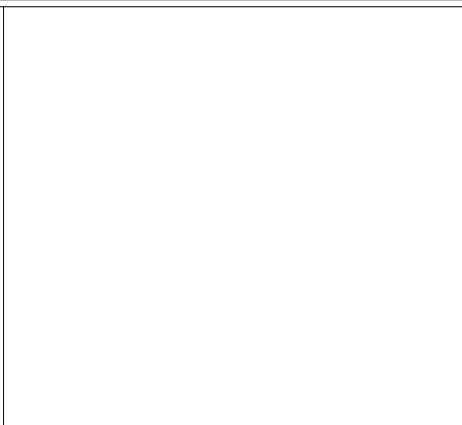
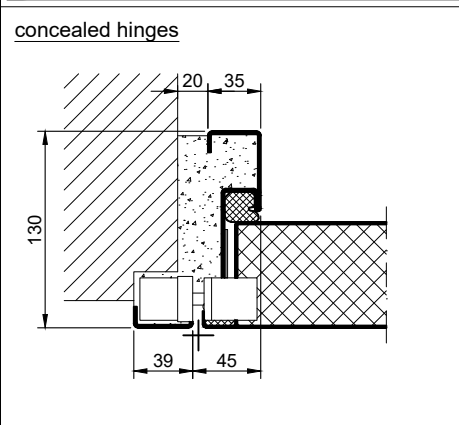
1.1.5 - PLANE LINE PL 301 48 DB - EN

technical modifications reserved - edition 03/2024

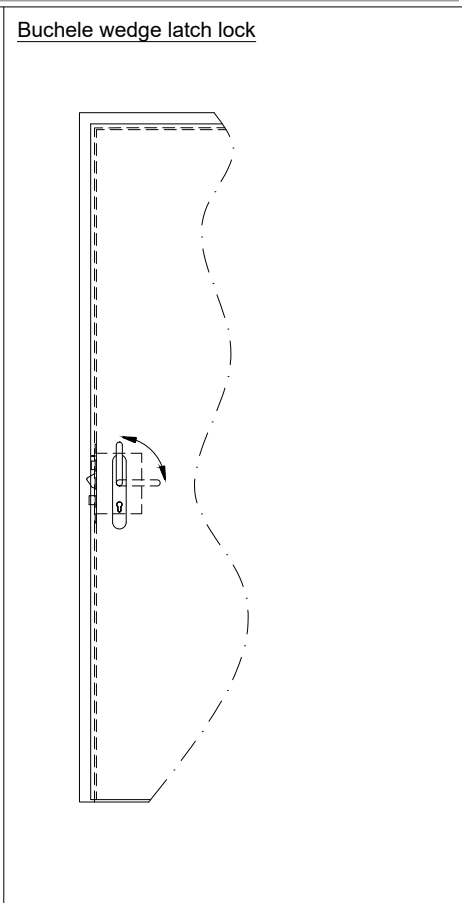
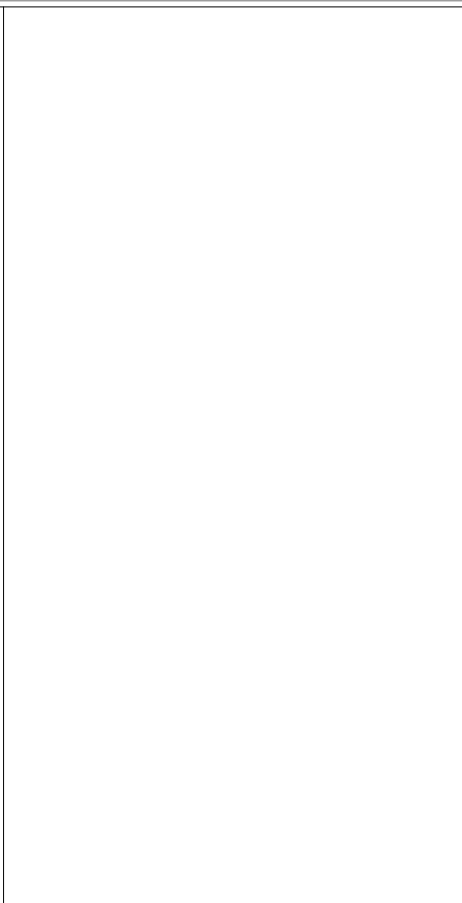
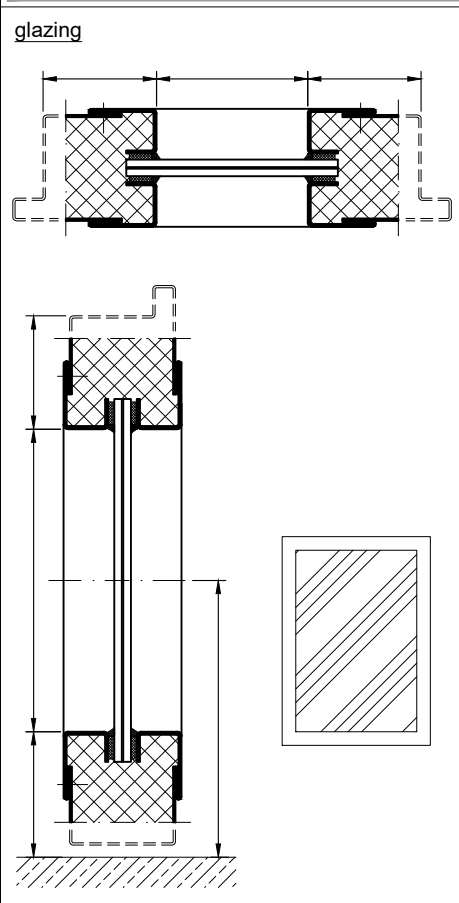
### PREMIUM - Version



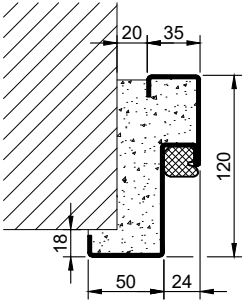
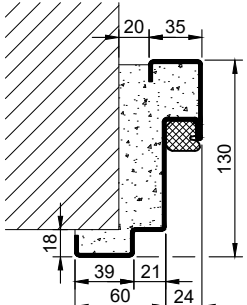
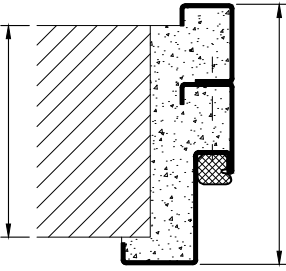
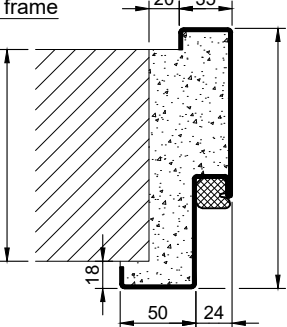
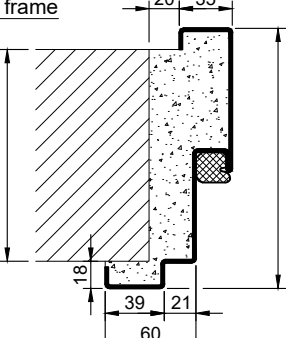
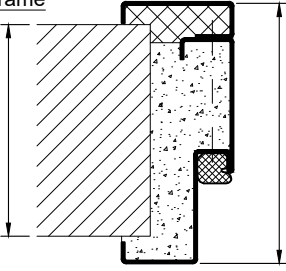
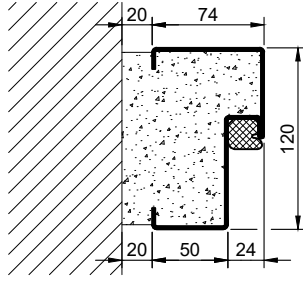
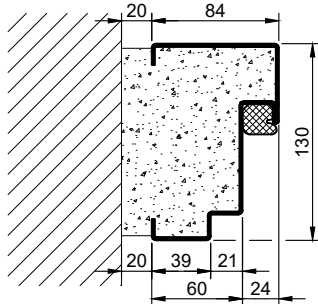
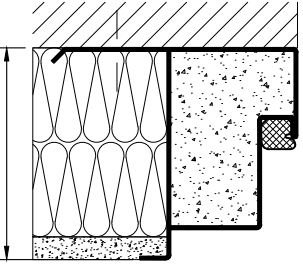
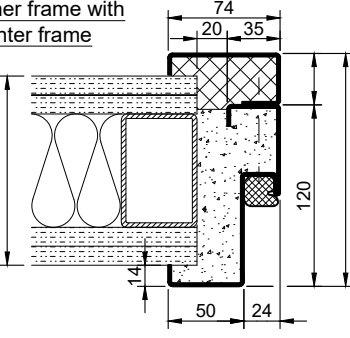
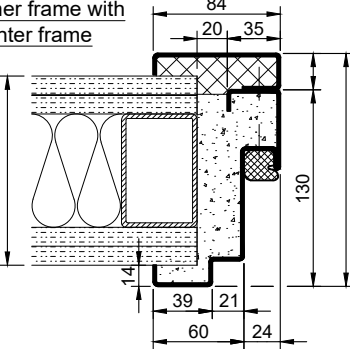
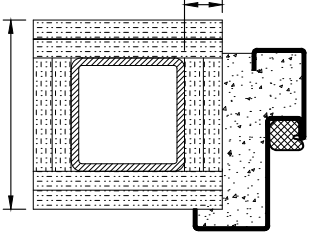
### SUPERIOR - Version



### Options

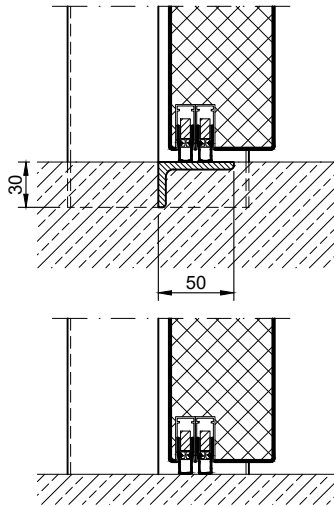


1.1.5 - PLANE LINE PL 301 48 DB\_EN

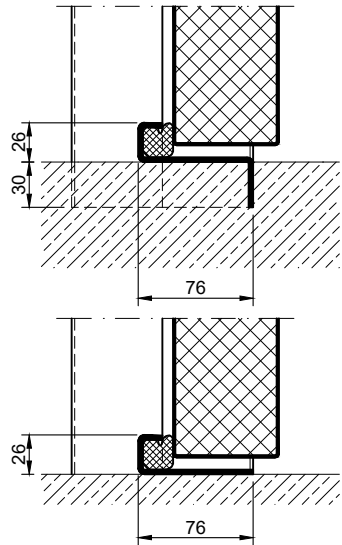
Frames BASIC	Frames PREMIUM/SUPERIOR	Variants (illustration BASIC)
<p>corner frame</p> 	<p>corner frame</p> 	<p>corner frame with additional frame</p> 
<p>encasing frame</p> 	<p>encasing frame</p> 	<p>encasing frame with counter frame</p> 
<p>block frame</p> 	<p>block frame</p> 	<p>juttet block frame</p> 
<p>corner frame with counter frame</p> 	<p>corner frame with counter frame</p> 	<p>corner frame at support / pillar</p> 

### Thresholds

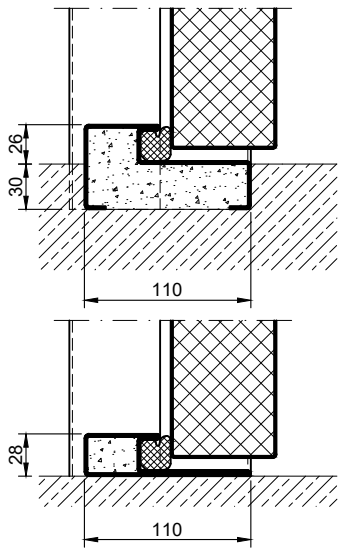
drop seal



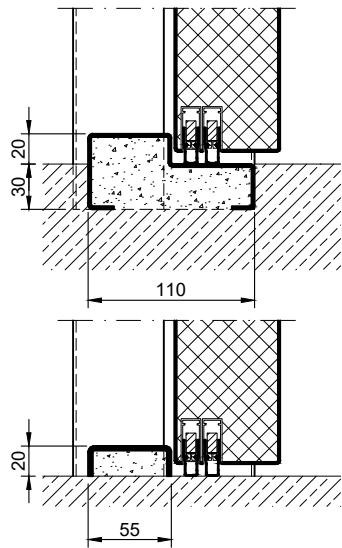
stop sill with seal



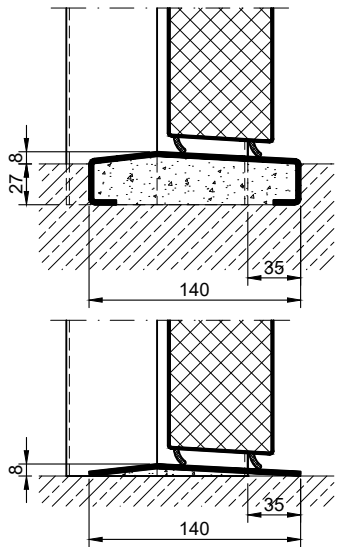
stop sill with seal



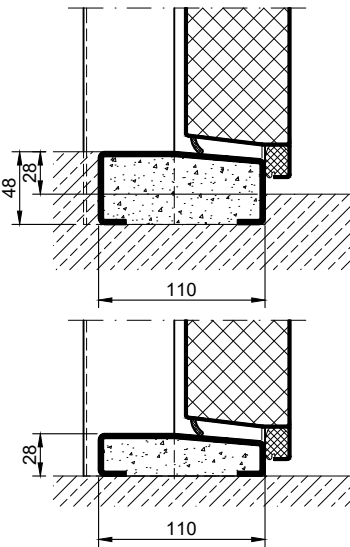
stop sill with drop seal



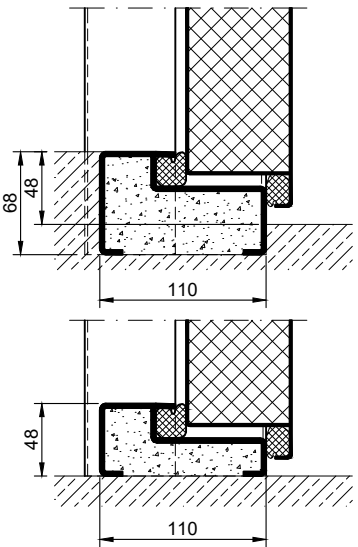
hump sill



half sill



full sill



1.1.5. PLANE LINE PL 301 48 DB\_EN

technical modifications reserved - edition 03/2024